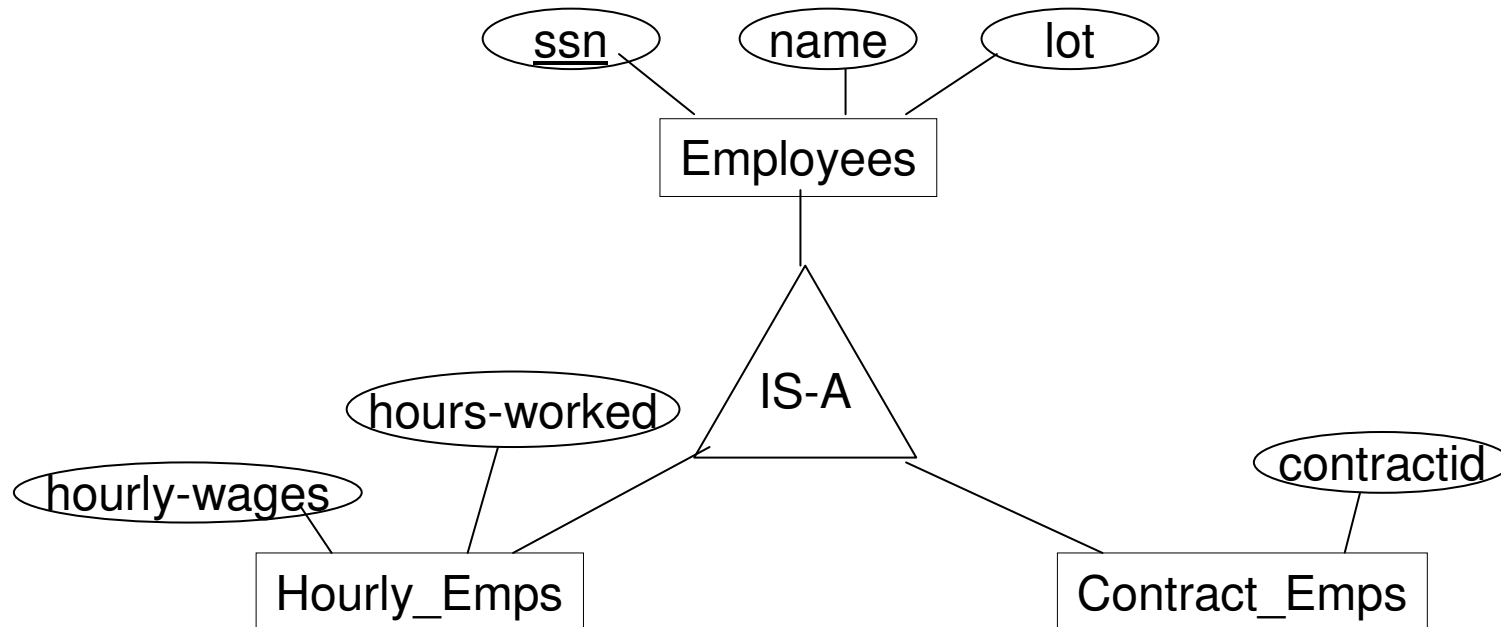


Translation of 'is-a' hierarchies



Two basic approaches:

1. Map each entity set into a relation.
2. Create 2 relations: hourlyemployees and contractemployees.

1st approach:

```
CREATE TABLE employees ( ssn INT, name CHAR(20), lot  
    CHAR(4),
```

```
    PRIMARY KEY (ssn));
```

```
CREATE TABLE Hourlyemployees ( ssn INT, hourly-wages  
    REAL, hours-worked INT,
```

```
    PRIMARY KEY (ssn),
```

```
    FOREIGN KEY ssn REFERENCES employees);
```

```
CREATE TABLE Contractemployees ( ssn INT, contractid  
    INT,
```

```
    PRIMARY KEY (ssn),
```

```
    FOREIGN KEY ssn REFERENCES employees);
```

2nd approach:

```
CREATE TABLE Hourlyemployees ( ssn INT, name  
    CHAR(20), lot CHAR(4), hourly-wages REAL, hours-  
worked INT,
```

```
    PRIMARY KEY (ssn));
```

```
CREATE TABLE Contractemployees ( ssn INT, name  
    CHAR(20), lot CHAR(4), contractid INT,
```

```
    PRIMARY KEY (ssn));
```

- When is the 2nd approach **not** applicable???